

## ANGUS WELLMASTER Couplings using break-off plug system

### Procedure for Break-off Plug Assembly

1.



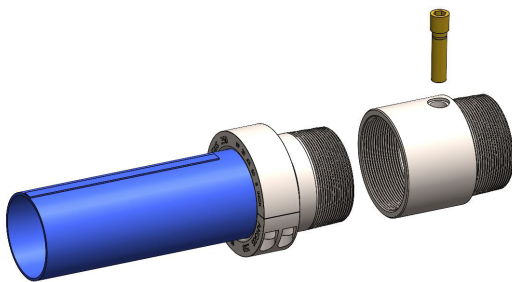
- Components Required:
- Break-off plug adaptor.
  - Torpedo and retrieval cable.

2.



- Remove the blanking plug and replace with the break-off plug.
- Tighten to a torque of 20 Nm / 14.6 Ft-lb.

3.



- For couplings 76mm (3") and below a break-off plug adaptor is required.
- Screw adaptor into the pump prior to attaching the coupling.

**For systems not using a break-off plug, the non-return valve in the pump MUST be drilled with a 6mm hole.**